

# Radicals Worksheet

1)  $\sqrt{72}$

$\sqrt{216}$

2)  $\sqrt{80}$

$\sqrt{\frac{4}{5}}$

3)  $3\sqrt{75}$

$\sqrt{\frac{4}{5}}$

4)  $\sqrt{125}$

$\sqrt{\frac{7}{11}}$

5)  $2\sqrt{288}$

$\sqrt{64x^5}$

6)  $\sqrt{128}$

$\sqrt{72x^3y^4}$

7)  $\sqrt{507}$

$\sqrt{45a^3}$

## Radicals Worksheet

15)  $3\sqrt{3} + 7\sqrt{3}$

16)  $3\sqrt{3} + 7\sqrt{3}$

17)  $3\sqrt{4} + 7\sqrt{5}$

18)  $\sqrt{8} + \sqrt{72}$

19)  $8\sqrt{5} - 2\sqrt{5}$

20)  $4\sqrt{75} - 2\sqrt{48}$

21)  $8\sqrt{54} - 3\sqrt{24}$

# Radicals Worksheet

1)  $\sqrt{36} = 6$

72  
 $\begin{array}{r} 2 \sqrt{36} \\ 6 \end{array}$

2)  $\sqrt{64} = 8$

80  
 $\begin{array}{r} 2 \sqrt{64} \\ 8 \end{array}$

3)  $\sqrt{144} = 12$

150  
 $\begin{array}{r} 3 \sqrt{25} \\ 5 \end{array}$

4)  $\sqrt{25} = 5$

125  
 $\begin{array}{r} 5 \sqrt{25} \\ 5 \end{array}$

5)  $\sqrt{100} = 10$

128  
 $\begin{array}{r} 2 \sqrt{64} \\ 8 \end{array}$

6)  $\sqrt{144} = 12$

128  
 $\begin{array}{r} 2 \sqrt{64} \\ 8 \end{array}$

7)  $\sqrt{169} = 13$

500  
 $\begin{array}{r} 3 \sqrt{169} \\ 13 \end{array}$

8)  $\sqrt{216} = 6\sqrt{6}$

216  
 $\begin{array}{r} 2 \sqrt{108} \\ 5 \sqrt{36} \\ 6 \end{array}$

9)  $\sqrt{\frac{4}{5}} = \frac{2\sqrt{5}}{5}$

10)  $\sqrt{\frac{7}{11}} = \frac{\sqrt{77}}{11}$

11)  $\sqrt{64x^5} = 8x^2\sqrt{x}$

64  
 $\begin{array}{r} 8 \sqrt{8} \\ x^4 \\ x^3 \\ x^2 \\ x \\ \sqrt{x} \end{array}$

12)  $\sqrt{72x^3y} = 6x\sqrt{2xy}$

72  
 $\begin{array}{r} 2 \sqrt{36} \\ 6 \end{array}$

13)  $\sqrt{45a^3} = 3a\sqrt{5a}$

45  
 $\begin{array}{r} 3 \sqrt{15} \\ 3 \end{array}$

a  $\sqrt{9a} = 3\sqrt{a}$

# Radicals Worksheet

15)  $3\sqrt{3} + 7\sqrt{3}$

$(10\sqrt{3})$

16)  $3\sqrt{3} + 7\sqrt{3}$

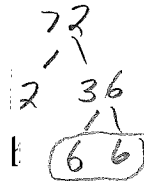
$(10\sqrt{3})$

17)  $3\sqrt{7} + 7\sqrt{7}$

$3(2 + 7)\sqrt{7}$   
 $(10\sqrt{7})$

18)  $\sqrt{8} + \sqrt{72}$

$2\sqrt{2} + 6\sqrt{2}$   
 $(8\sqrt{2})$

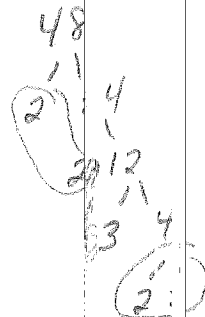
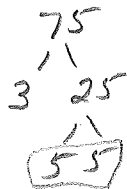


19)  $8\sqrt{5} - 2\sqrt{5}$

$(6\sqrt{5})$

20)  $4\sqrt{15} - 2\sqrt{15}$

$4(5)\sqrt{3} - 2(4)\sqrt{3}$   
 $20\sqrt{3} - 8\sqrt{3}$   
 $(12\sqrt{3})$



21)  $8\sqrt{4} - 3\sqrt{4}$

$8(3)\sqrt{4} - 3(2)\sqrt{4}$   
 $24\sqrt{4} - 6\sqrt{4}$   
 $(18\sqrt{4})$

